



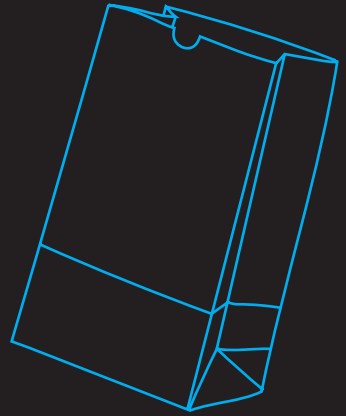
front view

back view

G. Peter Jemison (Seneca, b. 1945). *Apple Blossom Flurry*, 1995. Watercolor on paper.
Heard Museum Collection, Bequest of Elizabeth J. Thompson, 4305-4.

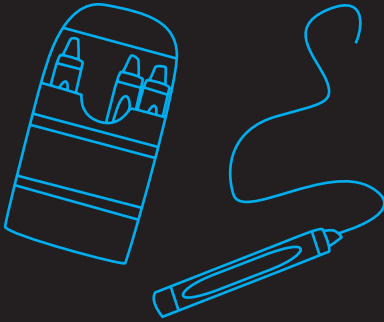
WHAT IS ILLUSTRATION?

Artists use different types of paint to create the designs, patterns, people or objects they want to **illustrate**. G. Peter Jemison wanted to show how apple trees look in full bloom in the springtime. He selected a paper bag and painted a tree using watercolors.



LOOKING AT ART:

- ◆ What do you see?
- ◆ What's happening?
- ◆ What does this remind you of?
- ◆ What patterns do you notice?
- ◆ How do you think this piece was made?
- ◆ What stands out? What did the artist do to make it stand out?



ILLUSTRATE A LANDSCAPE ON A PAPER BAG

Materials: paper bag, colored pencils, crayons, paint or markers

- ◆ When you spend time outdoors, what kind of landscape do you like best?
- ◆ Is there something in your landscape that stands out to you?
- ◆ Is it day or night, hot or cold, windy or rainy? Draw your landscape on the paper bag with colors and patterns that would help communicate that.

